

FIXED PRICE

Home and Land Package



Eden Vale
Park



Bayside Facade

Eden Vale Park
Lot 28, Loretto Way
Hamlyn Terrace NSW 2259

\$626,300

Land size: 404 m² Land price: \$305,000

Topaz 23

The Topaz crystallizes the balance of both form and function. The generous, well-appointed design ensures that the home's proportions provide plenty of space for everyday living and creates an environment where every member of the family feels at home before retreating to their own personal space.

 4  2  2  213.92 m²

| | |
|----------------|-----------------------|
| Living area | 166.11 m ² |
| Garage | 33.44 m ² |
| Alfresco | 11.98 m ² |
| Porch | 2.39 m ² |
| Overall width | 11.63 m |
| Overall length | 19.19 m |



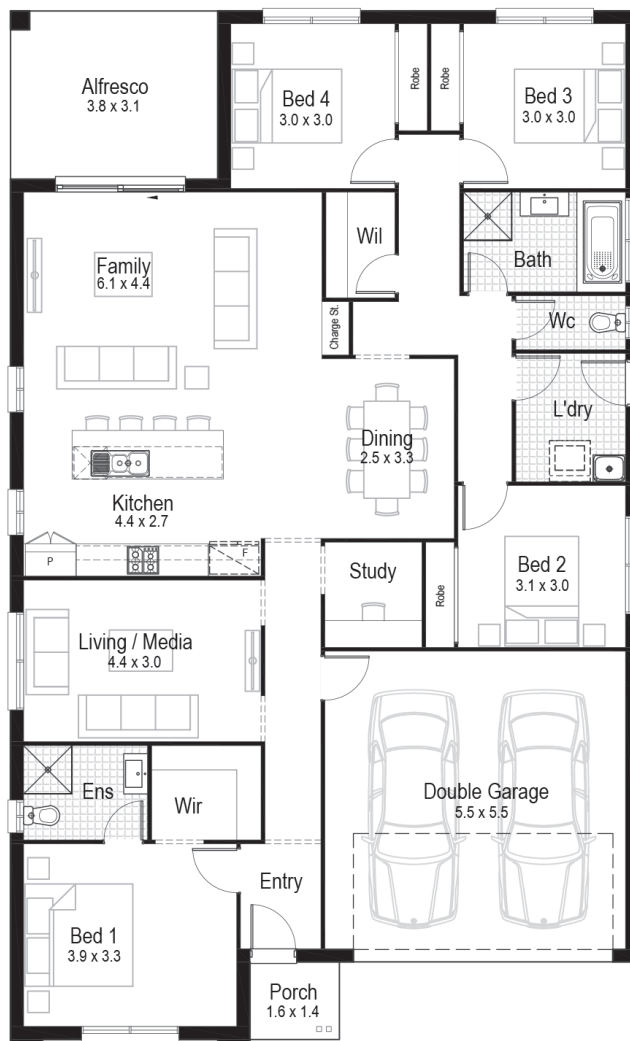
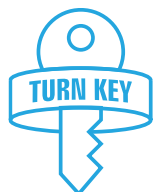
Our Guarantees

At Hudson Homes we understand the importance of time and money. And since delivering upon our promises to you is at the heart of everything we do, every customer is offered the peace-of-mind and security with our **'fixed price guarantee'** and our **'time-frame guarantee'**.

ENQUIRE NOW

 1300 246 700

 edenvalepark.com.au



IP Investor Inclusions

- Complete turn key solution
 - Standard site costs and BASIX
 - 6.0kw split system, reverse cycle air conditioner
 - Stainless steel cooktop and oven
 - Stainless steel recirculating pull-out range hood
 - Stainless steel dishwasher
 - Fully lined kitchen cabinetry with overhead cupboards and bank of 4 fully lined cutlery drawers
 - TAUBMANS® Endure paint system
 - Vertical blinds throughout
 - Modern bathroom vanity units with drawers and basin
 - Combined fan/light/heater to bathrooms
 - Ceramic tiles to bathroom, ensuite and laundry
 - Tiles to entry hallway, family kitchen and meal areas
 - Carpet to all other internal areas
 - Automatic garage door with 2 remotes
 - Fully finished and tiled outdoor alfresco
 - Ready-to-use NBN provisions
 - Slimline water tank
- And so much more...*

LP: Landscape Package

- Turf to front and back yards
- Australian native shrubs and edging
- Fencing with side gate
- Coloured concrete driveway and path
- Clothesline, letterbox and house number/s

**DEPRECIATION SCHEDULE BY
QUANTITY SURVEYOR INCLUDED**

ENQUIRE NOW

📞 1300 246 700

👉 edenvalepark.com.au