

FIXED PRICE

Home and Land Package



Eden Vale
Park



Crest Facade

Eden Vale Park
Lot 46, Loretto Way
Hamlyn Terrace NSW 2259

\$629,000

Land size: 412 m² Land price: \$295,000

Carmine 21

The Carmine offers an appealing floor plan with flexibility, comfort and convenience. From its designated meals area overlooking the alfresco right through to the privacy of the second, third and fourth bedrooms, this home has been designed with long-term satisfaction in mind.

 4  2  2  197.94 m²

Living area	155.02 m ²
Garage	33.15 m ²
Alfresco	7.52 m ²
Porch	2.25 m ²
Overall width	10.55 m
Overall length	20.39 m



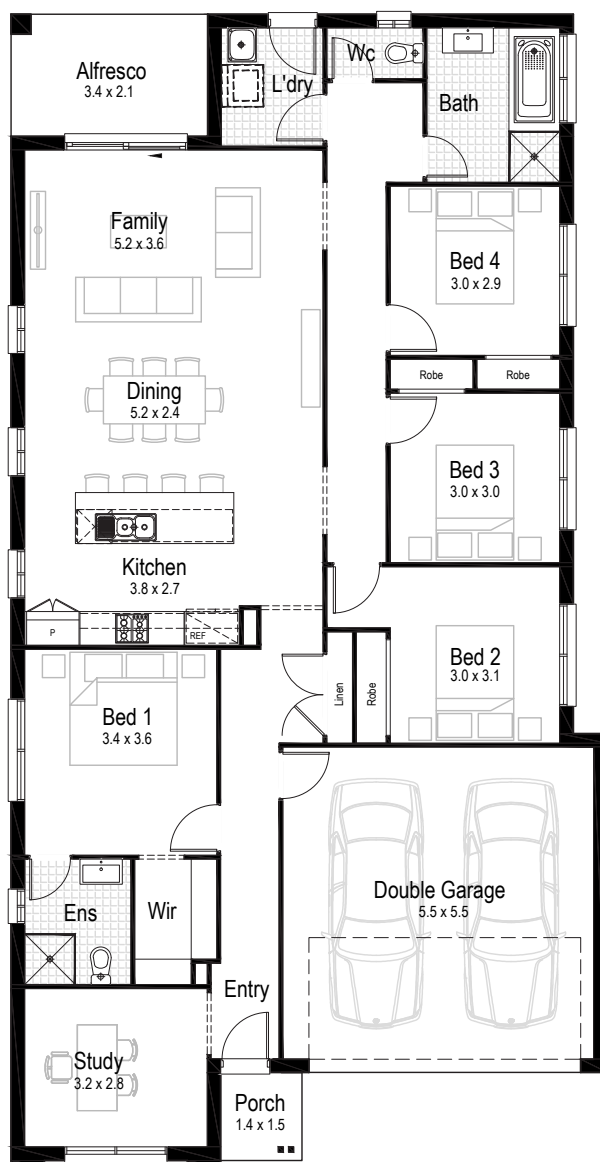
Our Guarantees

At Hudson Homes we understand the importance of time and money. And since delivering upon our promises to you is at the heart of everything we do, every customer is offered the peace-of-mind and security with our **'fixed price guarantee'** and our **'time-frame guarantee'**.

ENQUIRE NOW

 1300 246 700

 edenvalepark.com.au



H1 Smart Inclusions with Luxury Living Upgrade

- Standard site costs and BASIX
 - 20mm stone benchtop to kitchen
 - Soft close kitchen cupboards with bank of fully lined cutlery drawers and seamless overheads featuring kitchen bulkhead
 - Stainless steel cooktop and oven
 - Integrated ducted range hood
 - Stainless steel dishwasher
 - Stainless steel microwave with trim kit
 - Upgraded designer bathroom fitout
 - Contemporary floating style bathroom vanity units with 20mm stone benchtops
 - Combined fan/light/heater to bathrooms
 - Ceramic tiles to bathroom, ensuite and laundry
 - TAUBMANS® Endure paint system
 - LED downlights to entry, hallway, family room and meals area
 - Ceramic tiles to entry, family, kitchen and meals areas
 - Carpet to all other internal areas
 - Automatic garage door with 2 remotes
 - Fully finished and tiled outdoor alfresco
 - Ready-to-use NBN provisions
 - Slimline water tank
- And so much more...*



**PROFESSIONAL
DESIGNER
CONSULTATION
INCLUDED**

LP: Landscape Package

- Turf to front and back yards
- Australian native shrubs and edging
- Fencing with side gate
- Coloured concrete driveway and path
- Clothesline, letterbox and house number/s

ENQUIRE NOW

 **1300 246 700**

 **edenvalepark.com.au**